



# Apparent Power Control Systems

[www.appcs.in](http://www.appcs.in)

NEWSLETTER

ISSUE 2

JULY 2020

## Necessity of Short Circuit calculation In Electrical System

Modern industrial / commercial power systems have to be able to meet peak load without difficulty and load strain. The corresponding capacity or "spinning reserves" means that in the event of a fault, the short circuit current rises rapidly. Team APPARENT POWER CONTROL SYSTEMS provides you the right design and Solution for Equipment to meet the Challenges faced in power quality & stability.

Isc- Short circuit current must be calculated at each level of installed circuits in view of determining the characteristics of the equipment required to withstand or break the fault current.



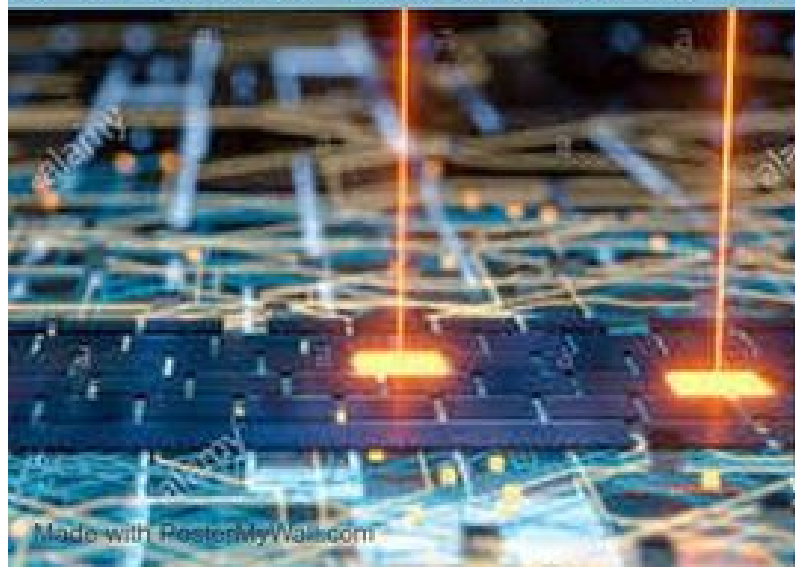
### Advantages:

- Helps in avoiding unplanned outages and downtime.
- Reduces the risk of equipment damages & fire break out.
- Increases safety & protects people from injuries.
- Determines the level & type of protective devices that are needed for dynamic withstand.
- Avoids interruptions of essential services.

### Norms:

- IEC 60909
- IS 13234

Calculation of Isc pertains to LV, MV & HV 3phase systems with Nominal voltage up to 230KV Nominal frequency 50Hz or 60Hz.



Contact Us:

Email: [ts@appcs.in](mailto:ts@appcs.in) / [sales@appcs.in](mailto:sales@appcs.in)

Phone: +91 733-8888590 / +91

8550-878888